

## TO INSTALL HATCH PATTERNS

Hatch patterns are created in standard file called ACAD.PAT. To install new hatch patterns you must find this file and add the new lines of code OR replace the file with the supplied already updated ACAD.pat file.

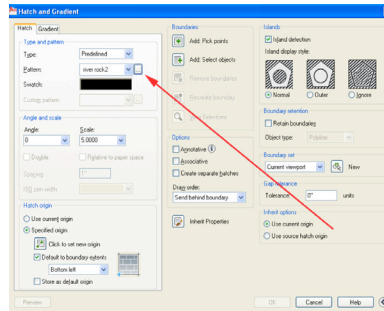
1. First find where your Acad.pat file is located. It should be

c:\Documents and Settings\your username\Application Data\Autodesk\AutoCAD or LT version\enu\support  
(mine is at C:\Documents and Settings\Dan\Application Data\Autodesk\AutoCAD 2010\R18.0\enu\Support)

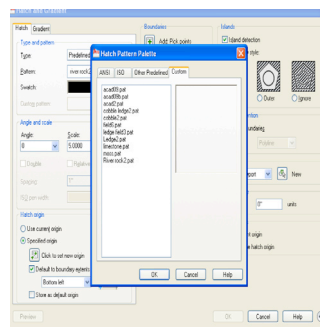
\*\* Note you will need to adjust your folder options in the control panel to see hidden and system files.

2. Once you have found the file location, Copy all of the individual .pat files in to this location.

3. Now when you start your hatch command click on the "... " Next to the Pattern Menu



4. Click on the CUSTOM tab, and the individual hatched will be listed.



5. To use a HATCH click on the name and then OK

\*NOTE Custom hatched may not display a preview Switch.

6. Now the hatch can be used in a drawing, you may need to experiment with the correct hatch scaling for your application.

